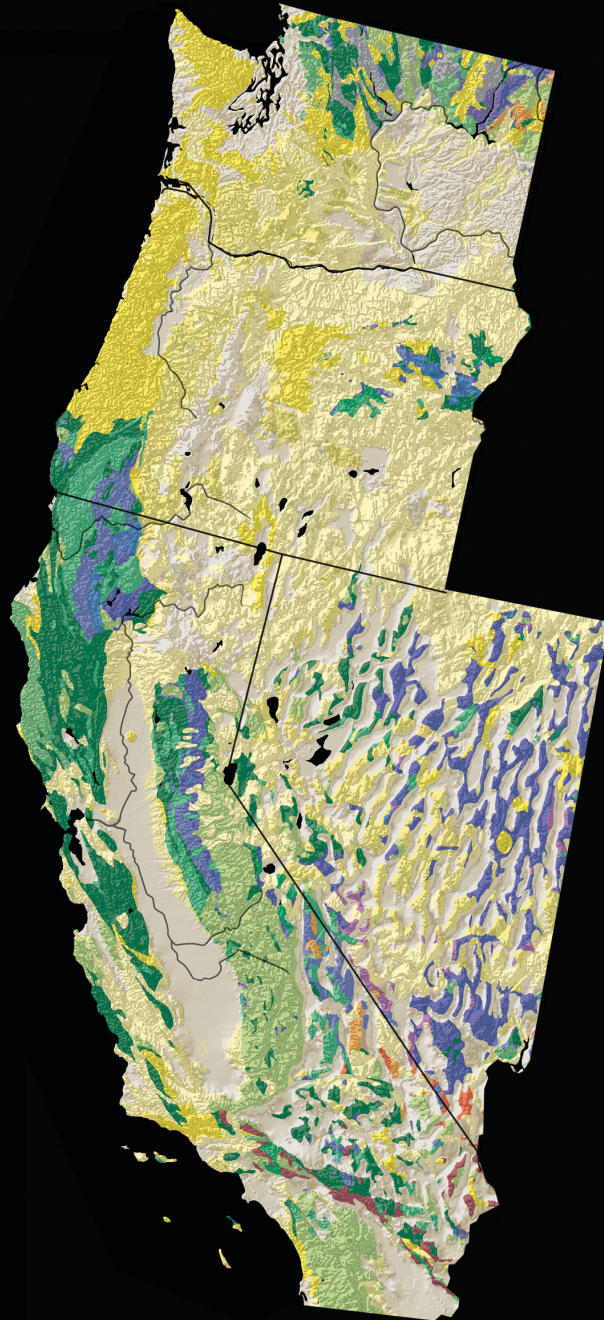


-  Quaternary
-  Neogene
-  Paleogene
-  Cretaceous
-  Jurassic
-  Triassic
-  Permian
-  Pennsylvanian
-  Mississippian
-  Devonian
-  Silurian
-  Ordovician
-  Cambrian
-  Late Proterozoic
-  Middle Proterozoic
-  Early Proterozoic :
-  Late Archean
-  Middle Archean
-  Early Archean



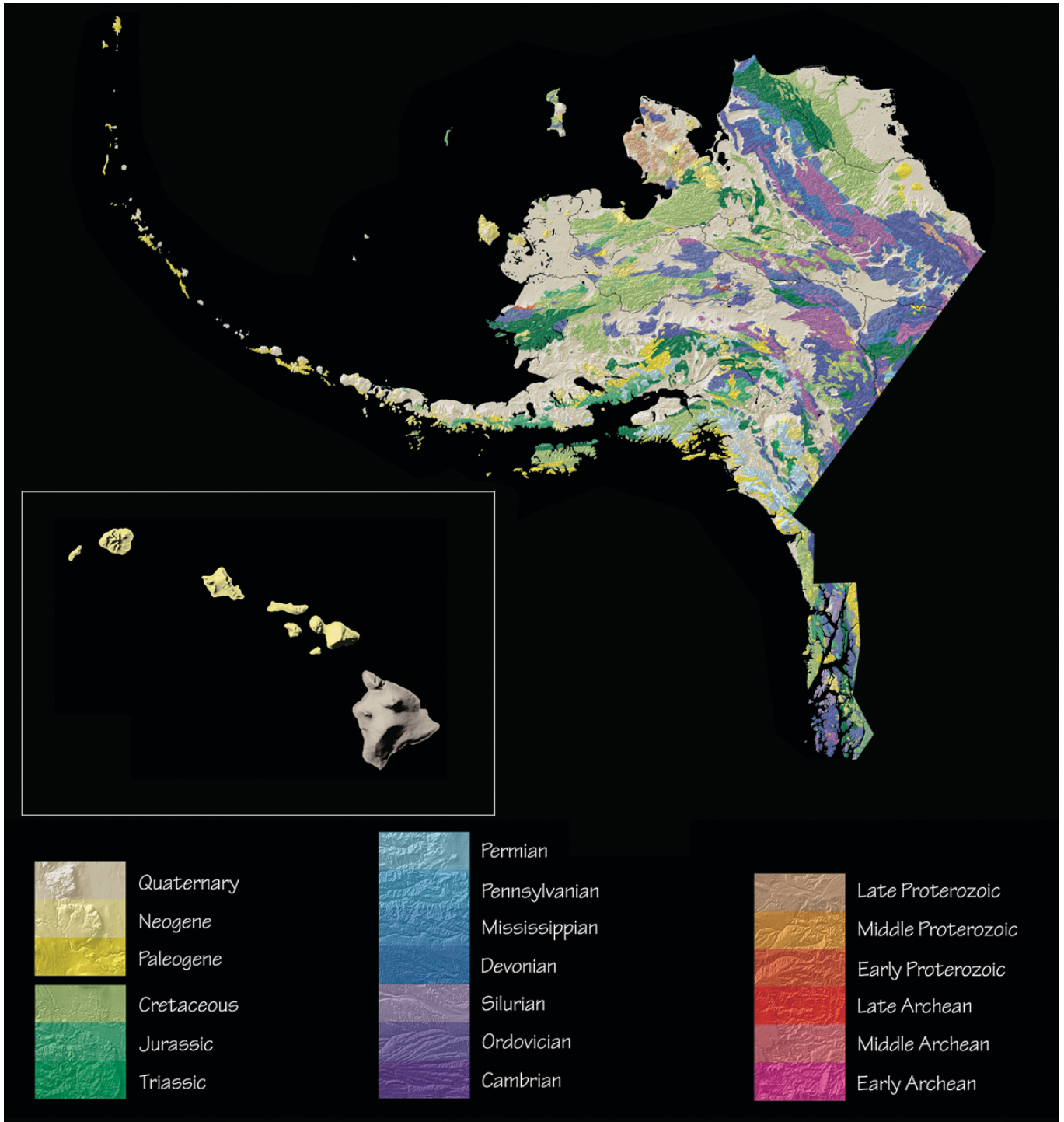
**PALEONTOLOGICAL**  
RESEARCH INSTITUTION

1259 Trumansburg Road  
Ithaca, New York 14850 U.S.A.  
[www.priweb.org](http://www.priweb.org)

ISBN: 978-0-87710-509-1



US \$35.00



The  
**Teacher-Friendly**  
Guide™

to the Earth Science of the  
Western US



Edited by Mark D. Lucas, Robert M. Ross, & Andrielle N. Swaby

Paleontological Research Institution  
2014

ISBN 978-0-87710-509-1  
Library of Congress no. 2014959038  
PRI Special Publication no. 47

© 2014 Paleontological Research Institution  
1259 Trumansburg Road  
Ithaca, New York 14850 USA  
[priweb.org](http://priweb.org)

First printing December 2014

This material is based upon work supported by the National Science Foundation under grant DRL-0733303. Any opinions, findings, and conclusions or recommendations are those of the author(s) and do not necessarily reflect the views of the National Science Foundation. The publication also draws from work funded by the Arthur Vining Davis Foundations and The Atlantic Philanthropies.



The interactive online version of this *Teacher-Friendly Guide™* (including downloadable pdfs) can be found at <http://teacherfriendlyguide.org>. Web version by Brian Gollands.

Any part of this work may be copied for personal or classroom use (not for resale). Content of this *Teacher-Friendly Guide™* and its interactive online version are available for classroom use without prior permission.

*The Teacher-Friendly Guide™* series was originally conceived by Robert M. Ross and Warren D. Allmon. Original illustrations in this volume are mostly by Jim Houghton (The Graphic Touch, Ithaca), Wade Greenberg-Brand, and Christi A. Sobel.

Layout and design by Paula M. Mikkelsen, Elizabeth Stricker, Wade Greenberg-Brand, and Katherine Peck.

*The Teacher-Friendly Guide™* is a trademark of the Paleontological Research Institution.

Cite this book as:

Lucas, M. D., R. M. Ross, & A. N. Swaby (eds.), 2014, *The Teacher-Friendly Guide to the Earth Science of the Western US*, Paleontological Research Institution, Ithaca, New York, xii + 424 pp.

Cite one chapter as (example):

Anderson, B., A. Moore, G. Lewis, and W. D. Allmon, 2014, Fossils of the Western US. Pages 81–123, in: M. D. Lucas, R. M. Ross, & A. N. Swaby (eds.), *The Teacher-Friendly Guide to the Earth Science of the Western US*. Paleontological Research Institution, Ithaca, New York.

**On the back cover:** Blended geologic and digital elevation map of the Western US. Each color represents the age of the bedrock at the surface. Adapted from Barton, K. E., D. G. Howell, & J. F. Vigil, *The North America Tapestry of Time and Terrain*, US Geological Survey Geologic Investigations Series I-2781, <http://pubs.usgs.gov/imap/i2781>.